

**2007 AWARD OF EXCELLENCE IN
CONSTRUCTION COMPETITION**



**RACKLEY
TECHNOLOGIES, LLC.**



PO Box 622 Pulaski, TN 38478 (931) 363-6922

Project Information Form

Provide the requested information exactly as it should appear in award-related materials and on the award. Include this form in the very front of the project's entry binder. (Photocopy this form in the event more than one project is being submitted for an award; each project submitted requires a completely separate entry form and binder.) If you have any questions regarding this application, please call the ABC of North Alabama office at (256)461-7470 or email Lorraine@abcnalabama.org.

Contractor Information

Name of contractor: Rackley Technologies, LLC

Company principal and title: David Rackley, President

Mailing address: P.O. Box 622

City: Pulaski State: TN Zip: 38478

Street address: 110 South First Street

City: Pulaski State: TN Zip: 38478

Phone: 931-363-6922 Fax: 931-363-6924

Primary Contact Information (For questions regarding this application)

Contact name: David Rackley

Title: President

Phone: 931-363-6922 Fax: 931-363-6924

Email: david@rackleytechnologies.com

Project Information

Name of project: Milky Way Farms Development

Project location (city/state): Pulaski, TN

Entry category (see list): Associate

Starting date of construction: August 2007

Completion date of construction: Ongoing

ABC Chapter Information

Name of company's ABC chapter affiliation: ABC of North Alabama

Does this chapter have an awards program? ☒ Yes ☐ No

Has this project won an ABC chapter award? ☐ Yes ☒ No

If yes, indicate the award category: _____

Other Project Information

Was this a Design-Build project in your contract with the owner or general contractor? ☒ Yes ☐ No

Was this a Leadership in Energy and Environmental Design (LEED) certified project through the U. S. Green Building Council? ☐ Yes ☒ No

If yes, indicate the level: _____



(These Stickers provided to Customers)

Table of Contents of Photographs

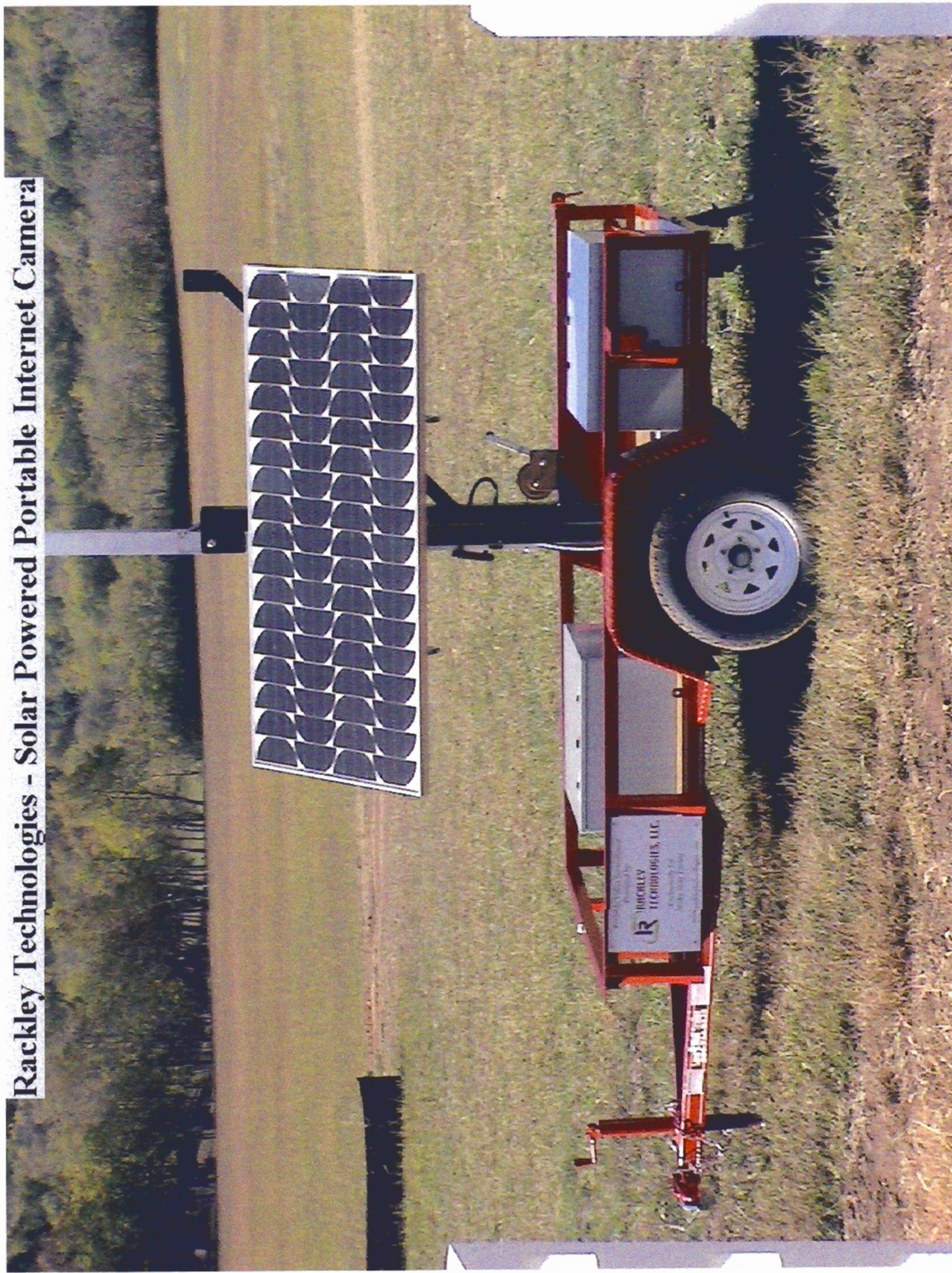
- 1) Entrance Photograph of Milky Way Farms
- 2) Solar Powered Mobile Internet Camera designed and built by Rackley
- 3) Solar Powered Mobile Internet Camera Close-up Photo
- 4) Solar Powered Fixed Internet Camera with descriptions
- 5) Screenshot of Milky Way Farms Web Site
- 6) Screenshot of Milky Way's Camera Web site Link
- 7) Actual photo taken by the Camera while Supervising Construction
- 8) Actual photo taken by the Camera during general surveillance
- 9) Actual photo taken by Sales Agent during virtual tour for prospective buyer
- 10) Rackley Technologies custom software for viewing stored photos



Rackley Technologies - Solar Powered Mobile Internet Camera



Rackley Technologies - Solar Powered Portable Internet Camera



Wireless
Internet
Receiver

Extension
Added to
reach over hill
to tower

IP Base Camera

Camera located
20 Feet off
Ground

Solar Panel

Solar Equipment
and Battery

Milky Way Farms
Solar Internet Camera

http://www.milkywayfarmstn.com/

File Forward View Favorites Tools Help

Open PDF in Word

Milky Way Farms of Tennessee, LLC - Luxury real estate



Located just outside of charming Lynnville, Tennessee, historic Milky Way Farms offers scenic landscapes and a peaceful way of life. Milky Way Farms will offer homesites of varying arrangements: estate lots, lake cottages, equestrian cottages and condos.

With a rich history and scenic locale, Milky Way Farms is an ideal location for those looking for that special place to call home.



The Original Milky Way Farms Manor House

ABOUT US HISTORY AMENITIES GOLF EQUESTRIAN PHOTO TOUR NEWS WEB CAM CONTACT US



Milky Way Farms Live Progress Cameras



Live Progress Cameras
Click on Links below to go to Milky Way Farms LIVE!



[Founders Ridge Camera](#)

[Mobile Camera](#)

Technology provided by:



www.rackleytechnologies.com

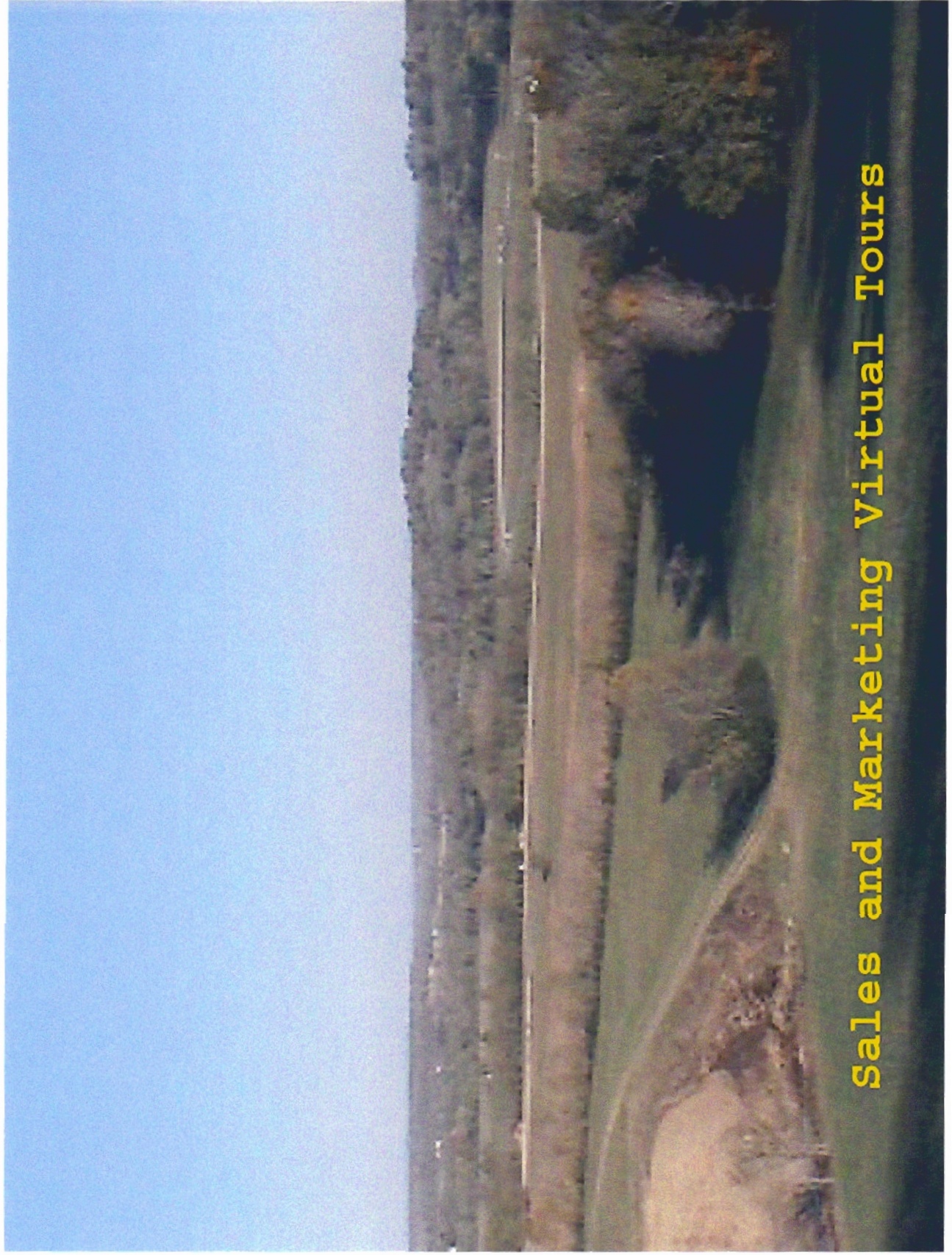
The Camera's Home page will open first and ask you to select either the Java Applet or ActiveX viewer. Some Antivirus Software will prohibit use of either of these. If you do not see an image within a few seconds of selecting one of them, your antivirus software may prevent viewing. Select "YES" if you are prompted to download the ActiveX viewer. If the image appears black with a small red "x" in the box, please visit www.rtm.com and download the latest Java download.



Construction Supervision



Security and Surveillance



Sales and Marketing Virtual Tours

03/09/2006 - 08:05 - Filename: 06030908052300.jpg



0.1 Seconds

Previous

Playback

Next

Select Date to Playback:

March, 2006

Mon	Tue	Wed	Thu	Fri	Sat	Sun
27	28	1	2	3	4	5
6	7	8	9	10	11	12
13	14	15	16	17	18	19
20	21	22	23	24	25	26
27	28	29	30	31	1	2
3	4	5	6	7	8	9

Download entire day

Time Range Download:

Start Time:

12:00pm

End Time:

12:00am

Download Time Range

E-mail this image to:

Print Photo

Send



Exit Program

Contracted Scope

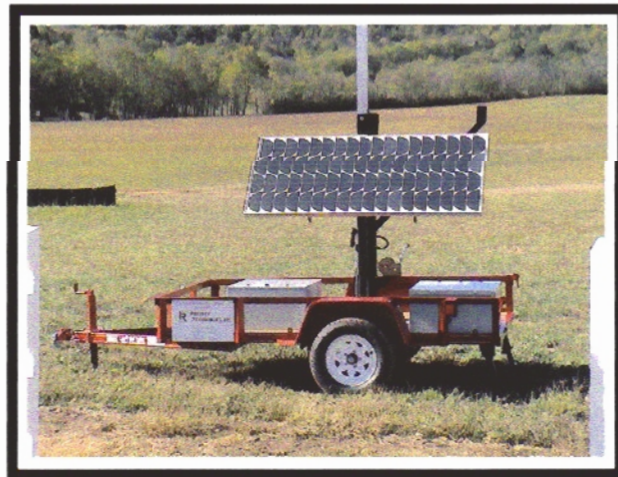
During the summer of 2007, Brindley Construction, LLC and Milky Way Farms began a joint project to build the first “spec” house on the development at Milky Way Farms. Rackley Technologies, LLC has provided Brindley numerous job site cameras and Brindley encouraged Milky Way Farms to consider these cameras for their new development to monitor the progress of the spec house. In July of 2007, Rackley met with O’Neal McCall, construction superintendent for the development. One huge hurdle was in the way of installing job site cameras, there was no electrical source to supply power for the cameras.

In early August of 2007, Rackley Technologies, LLC researched the use of “solar” power and proposed a solar solution for Milky Way and they quickly accepted the proposal and awarded the contract to Rackley Technologies. Rackley ordered all equipment and installed their first “solar-powered” wireless Internet accessible job site camera in late August 2007.

The Job Site Camera was strategically placed on a hillside to provide the most viewable coverage of the entire development, focusing on the spec house. Rackley Technologies provided Milky Way a web site for accessing the camera from any Internet-accessible computer.

The Sales Agents for Milky Way quickly discovered the value of the camera as a marketing tool. The administration at Milky Way Farms was excited about the possibilities of the solar camera and contacted Rackley again to discuss a “portable” unit. Rackley immediately began researching, designing and building its first “portable, solar-powered wireless Internet camera solution and delivered it to Milky Way in October of 2007.

The contracted amount of the fixed solar camera, installed was less than \$7000 and the portable unit was developed for approximately \$12,000.



The Solar-Powered Portable Camera Solution for the Development at Milky Way Farms

Since its inception in 2004, Rackley Technologies, LLC has provided its customers with the latest in technological advances in many areas, including its Job Site Surveillance and Monitoring Cameras. They strive to continuously research and implement solutions that benefit customers in many ways. Kathy Pigg with Brindley Construction, LLC says, "Your latest brain child, the solar powered, portable camera is not only revolutionary it is also a multifaceted solution for so many of our needs."

For several years now, Rackley Technologies, LLC has provided Job Site Camera solutions to the construction industry. Solutions ranging from wireless Internet, wired Internet, satellite Internet to the legacy Closed-Captioned TV (CCTV) systems have been provided depending on availability and customer needs.

Brindley Construction, LLC, a front-runner in the construction industry in the Southeast has been proactive in implementing technology in their construction



projects. Recently partnering with the Development at Milky Way Farms in Pulaski, Tennessee, a luxury residential community, to build a "spec" house, they encouraged Milky Way to implement a Job Site camera for the house. No source of electricity was available at the time to power the cameras. Rackley met with O'Neal McCall, construction superintendent for Milky Way and discussed the use of solar power for this project. Rackley only having used solar on one other small project felt confident they could develop an acceptable solution for this project. McCall took the risk and allowed Rackley to research, design and develop a solar solution for Milky Way.

Rackley's first Solar-powered Job Site Surveillance Camera was installed in August of 2007. Wireless Internet was obtained from a local Internet Service

Provider in Pulaski. Therefore, there were no wires or cables whatsoever needed to the camera. Once installed, Rackley developed a web site for accessing the camera via the Internet. Milky Way added a link on their own site, "Web Cam", so visitors to their site could see the spec house too. Rackley programmed the camera to move continuously around the development so visitors would see the entire site via the camera. As with all its Job Site Cameras, Rackley set the camera to save images at prerecorded frequencies. A custom developed software program by Rackley, the Rackley Image Viewer, (see snapshot in Photograph Section) allows customers to view images stored on servers located at Rackley's headquarters.

Mr. McCall, other construction officials, employees of Brindley Construction and officials with Tycon Excavating Contractors, Inc. quickly began using the camera to monitor construction activities not only on the "spec" house but the entire development. Mr. McCall stated, "Your knowledge of security equipment and technology as proven to be a much needed asset to the development at Milky Way Farms."



Mr. McCall, fascinated by the control functions of the camera, especially the "zoom" capabilities, quickly demonstrated the camera to other administration officials with Milky Way Farms. As the wheels turned and their minds raced, sales agents quickly found the advantages of the cameras as a marketing tool.

Shortly thereafter, Mr. McCall called Rackley again to discuss the possible development of a "portable" unit capable of being moved frequently around the 1100 acre Milky Way Development and possible use on other of New Horizon Community's developments across the United States. Rackley quickly began researching the "portable" opportunity, providing a quote within a few days. Milky Way was quick to accept this and proceeded with the development of the first totally portable, solar-powered job site surveillance and monitoring camera. It was designed and assembled by Rackley Technologies, LLC employee, Robby Bassham, with the camera mast and basic frame construction completed by

Pinnacle Construction Company of Pulaski, Tennessee. Within two months the portable unit was tested and ready for delivery.

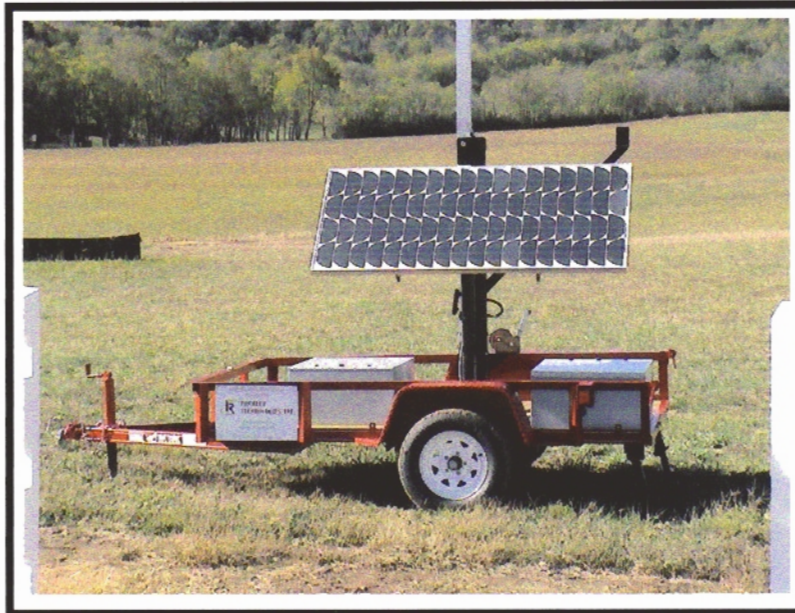
The sales agents at Milky Way quickly became trained on the use of the camera, including how to control the cameras while giving prospective buyers a virtual tour of the development. Within days, they realized the potential of the cameras as a marketing tool. Sims Curry, sales agent, states "We have been aware of the success of this technology but never realized how much of an important sales tool this would become for our real estate company. It provides amazing views of the picturesque landscape of the Middle Tennessee countryside". He goes on to say, "it is an extremely useful tool for construction and security monitoring. Now thanks to Rackley Technologies, LLC, we are allowing potential buyers to experience the magic of Milky Way Farms from anywhere in the world. These cameras are an irreplaceable sales tool." Kathy Pigg with Brindley also states, "this is truly an exciting extension of our sales force."

Another advantage of the portable camera unit is the ability to allow the owners to see the progress of their investment from far away. Susan Witton, Milky Way Farms property owner currently living in Virginia, provided the following insight to the Milky Way sales agents, "I credit Rackley Technologies, LLC with allowing me to feel that I am already a part of Tennessee and Milky Way Farms because I log into the camera and I am 'there' everyday. There is nothing like 'seeing' to 'believe'." She goes on to say " (I) am usually greeted by four or five deer who are happily grazing on the hillside thrilling me with the natural beauty of what is before me."



On one occasion another owner, while logged into the camera, spotted smoke in the vicinity and quickly called the Sales office to inquire and was informed it was only the excavating company burning brush. She was quickly relieved.

Rackley Technologies, LLC is please to have been chosen by Milky Way Farms and Brindley Construction, LLC to provide a multifaceted camera solution. The cost vs. benefits of a job site camera are unique enough to merit consideration of an Excellence in Construction award. However, the true benefits of something providing as many uses as the solution provided to Milky Way Farms are the satisfaction and success of those that implement the camera for construction supervision and monitoring, overall grounds security and surveillance and use as an “irreplaceable sales tool.”





Safety

Safety is a primary concern of Rackley Technologies, LLC. An office meeting is held weekly to discuss the status of all projects. During the meeting, all safety related issues are discussed. Any potential areas of concern are discussed prior to installation of cameras. Rackley Technologies, LLC. purchased a 36 foot tow-behind man-lift for camera installations to avoid the use of ladders on job sites. All installations are performed by a two-man team.

The areas discussed include, but are not limited to the following:

- Height of camera installation

- Avoidance of use of ladders

- Mechanical operation of the man-lift

- Safety while operating the man-lift, harness and all appropriate equipment

- Discussion regarding proximity to live power lines.

- All tools and equipment used on site

- Proper installation of equipment

- Proper packing and storage of camera equipment during transport

- Proper storage of tools and equipment in cargo van

- Proper placement of extension cords, if needed during installation.

November 14, 2007

Excellence in Construction Committee

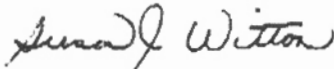
Dear Committee Members:

As a new lot owner and thus a member of the Milky Way Farms family, I would like to describe how the Web Cameras developed by Rackley Technologies, LLC have played an important part in our lives. When you purchase property in a new development which is so far from your own primary residence (in our case Virginia), it would be extremely easy to feel isolated and left out of the progress of what will eventually be your home. Because the whole development is in excess of 1100 acres, it was also impossible to see everything when you purchased. The sales staff does an excellent job letting us know of upcoming events, and when ground is breaking in a new area, but there is nothing like "seeing" to "believe".

Every morning I tune in to watch the progress of the first home which is under construction and which is on the lot next to ours. It is easy to see that a great deal of personal attention and care is going into its construction. On another day the cameras may be directed to the progress of the new ribbon of roads, or like today, on the ground movement for the golf course and lake. In the late afternoons I again log on to check on things and am usually greeted by my four or five deer who are happily grazing on the hillside thrilling me with the natural beauty of what is before me. I have been able to see the trees change from their normal green to a splendid shock of color, greeting everyone who enters the long drive into Milky Way Farms. The cameras have given me the privilege of enjoying the tremendous beauty of the area while I wait for our turn to proceed.

I credit Rackley Technologies, LLC with allowing me to feel that I am already a part of Tennessee and of Milky Way Farms, because I am "there" every day. I can only hope that this company is afforded your highest consideration for your 2007 Excellence in Construction Award.

Sincerely,



Susan J. Witton



November 5, 2007

David Rackley
Rackley Technologies
P.O. Box 622
Pulaski, TN 38478

**Re: Excellence in Construction Committee
Letter of Recommendation**

I am writing this Letter of Recommendation as a Sales Agent for the Milky Way Farms luxury residential community in Giles County, Tennessee.

David Rackley and his team with Rackley Technologies delivered our first property web assessable camera several months ago. Most recently, they delivered our first "mobile unit" to the development.

We have become aware of the success of this technology through other projects of Rackley Technologies over the years, but I never realized how much of an important sales tool this would become for our real estate company.

In addition, we continue to receive feedback from individuals all over the country who share with us how exciting it is to see the progress going on at Milky Way Farms, prior to making their onsite visit. Not only do the web cameras allow potential buyers to witness the progress occurring through construction here on the property, but the cameras also clearly provide amazing views of the picturesque landscape of the middle Tennessee countryside.

Along with many potential buyers accessing these web cameras via our website, a number of our current property owners have expressed how wonderful it is to go to our website and see all the activity going on at their new home. Since most of our new property owners are scattered throughout the country, they are unable to personally visit on a frequent basis. These owners are also using the web cameras as means to show their new homes to friends and family over the internet.

In closing, these cameras have long been an extremely useful tool for construction and security monitoring. Now, thanks to Rackley Technologies, we are allowing potential buyers to experience the magic of Milky Way Farms from anywhere in the world. These cameras are an irreplaceable sales tool.

Sincerely,

R. Sims Curry
Sales Agent
Milky Way Farms
Pulaski, TN
931-363-9769



November 6, 2007

David Rackley
Rackley Technologies, LLC
P.O. Box 622
Pulaski, TN 38478

Re: Letter of Recommendation

Dear David,

I am writing to commend you and your company for the outstanding services you have provided to us this year. Your knowledge of the security equipment and technology has proven to be a much needed asset to the development at Milky Way Farms.

In this day and age of technology, we at Milky Way Farms feel that it is of the utmost importance to stay "with the times". Your company has provided us with the avenue to do so. The cameras that were placed on Founder's Ridge not only provide us with a sense of security by being able to monitor the activities on the property, but they have proven to be an effective marketing tool as well.

Your cooperation and timely response to our needs is greatly appreciated and we are glad to execute this letter of recommendation for you.

Sincerely,

Oneal McCall
Project Manager
Milky Way Farms



747 West College Street • P.O. Box 303 • Pulaski, Tennessee 38478
Office: 931.363.4544 • Fax: 931.363.1503
Web: www.brindleyconst.com

Mr. David Rackley
Rackley Technologies, LLC
P.O. Box 622
110 South First Street
Pulaski, TN 38478

Re: Milky Way Farms

Dear David:

You have been instrumental over the past three years in keeping us abreast of changing technology. The web cams that you have installed on our projects have increased production, eliminated theft and served as a marketing tool for Brindley Construction, LLC.

Your latest brain child, the solar powered portable camera is not only revolutionary, but is also a multi-faceted solution for so many of our needs for the construction of the new residential home in Founder's Gap at Milky Way Farms. You have allowed us to have constant communication on a building site that has no available utilities. We use it to monitor the job's progress as well as provide security at our remote construction site.

Another element is the ability that the solar camera provides as a marketing tool. We have directed many potential clients to view our beautiful new home on our web site. This is truly an exciting extension of our sales force.

Again, let me thank you for providing a multi-faceted solution for a very real construction issue. Your dedication, knowledge and hard work are to be commended.

Very truly yours,

A handwritten signature in blue ink that reads 'Kathy T. Pigg'. The signature is written in a cursive, flowing style.

Kathy T. Pigg
Executive Vice President

'King Mars' Restored, Returned to Place of Prominence

The oil painting of King Mars, one of the thoroughbreds at Milky Way Farms, has for years had a prominent place in the mansion's front room, sitting on the mantle over the fireplace. It was recently discovered, however, that ultraviolet light, foxing (mold), water and abuse had collectively damaged the painting severely.

Charles Ausburn, the new owner of Milky Way Farm, decided to have the painting of King Mars restored. Heading up the project was Jim Green, resident artist of Milky Way Farm. Restoring the painting was artist Lucille Thompson Love of Huntsville, Ala., with student assistant Daniel Inman of Pulaski helping her. Re-framing the painting afterward was done by Kimberly White of Pulaski.



Art restoration is a highly-specialized field with only a handful of specialists practicing in the world today. Love is one of those specialists who has restored hundreds of priceless painting, drawings,

watercolors and photographs over the past 40 years. Her clients have included the most prestigious museums and universities as well as private collectors and corporations. She is regarded as one of the very best in her field.

The artist, Gertrude Orde, used a photograph of the horse to do the painting. Orde traveled in the highest social circles and was well known for painting children's portraits.

The procedure of restoration is always determined by the condition of the work to be restored, Green explained. Once removed, the painting was cleaned using first a chlorine solution to remove the mold then a chemical solution and cue tips to remove years of soot, grime and varnish.



Milky Way Farms

Feel free to contact us:

By Phone: 931-363-9769

Toll Free: 1-800-869-9788

By Email:

donnie@milkywayfarmstn.com

By Mail:

Milky Way Farms

520 Milky Way Road

Pulaski, Tennessee 38478



NEW HORIZONS
COMMUNITIES

Milky Way Farms of Tennessee, LLC is the newest venture for South Carolina-based New Horizons Communities. More than just a real estate development company, New Horizons understands the delicate balance between new development and the existing environment of a site.

Where is Milky Way?

Milky Way Farms of Tennessee is located in Giles County, Tennessee between the towns of Pulaski and Lynnville on U.S. Highway 31, a few miles west of Interstate 65, approximately one hour's drive from Nashville, Tennessee and Huntsville, Alabama.



*Artist Rendering
Subject to change.*

Milky Way Equestrian Center

Features

- Riding Center
- Polo Field
- Expansive Boarding Facilities
- All Disciplines Embraced

Jay Haas Galaxy Club

Features

- 18-hole Golf Course
- Swimming Facilities
- Spa
- Tennis Courts

Additional Proposed Features

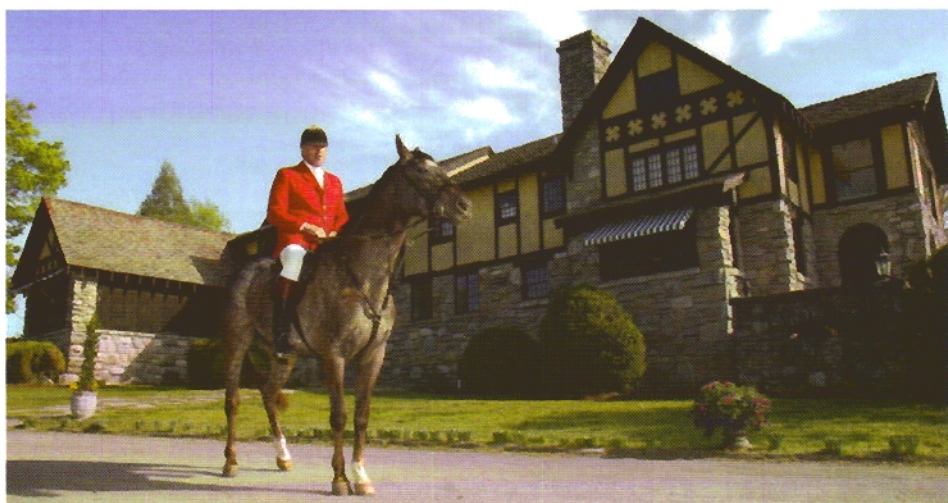
- Shopping Village
- Amish Boutique
- Walking/Biking Trails



*Articles and photos courtesy of Scott Stewart and Johnny Phelps/The Pulaski Citizen and The Giles Free Press

Milky Way Farms of Tennessee is on the Internet at www.milkywayfarmstn.com

Equestrian Excellence Returns to Milky Way Farms



Milky Way Farms, established 70 years ago by candy magnate Frank Mars and revived by Developer Charles Ausburn, is putting equine life back into the many structures on the property by building an Equestrian Center to become one of the best available in the area.

"With a few of Mars' incredible barns and the race track where 1940 Kentucky Derby winner Gallahadion trained still standing, it isn't really that hard to realize how special the Equestrian Center is going to be to this development," Ausburn said. "What we didn't know is we would find the right person to help us in our own backyard."

Equestrian Keith Jackson will lead Milky Way Farms' Equestrian Center to excellence.

Jackson, a native of Bourne End, Buckinghamshire, England, has been living in Giles County for nine years and offered the experience, expertise, character, temperament and work ethic that Milky Way Farms needed.

"My father was a horse dealer, so I grew up around horses," said Jackson who spent his youth "trying out" the many breeds of horses his father purchased.

This early training will prove useful for the Equestrian Center at Milky Way Farms where all equine disciplines will be embraced. "We will welcome all breeds of horses," said Jackson. "Hunter, jumper, gaited, western - I have assembled a top-notch team of people ready to come on board with expertise in all disciplines."

An accomplished competition rider, Jackson was trained by two of the top

"I want our facilities, services and events to be such that our horse owners are satisfied they can enjoy their horses here."

- Milky Way Farms
Equestrian Center Director
Keith Jackson

show-jumping trainers in England, Phil Oliver and Dick Stillwell. In 1992, he and his wife Carol, an accomplished horsewoman from California, moved from England to Eagleville, Tenn., to start a business breeding and training horses. They later moved to Giles County and founded Manorbier Farm to carry out breeding, boarding and training operations.

Now, Jackson will use his experience and knowledge to care for the horses of the Milky Way Farms community. "We are going to run a top-notch establishment," he said. "We will have a large area available with room for expansion. We will be working to the highest standards."

Those facilities will include the restoration of Mars' "Show Horse Barn," an amazing stone structure that will serve as the Riding Center.

A 630-foot cattle barn in the center of the Equestrian area will be renovated to provide boarding facilities. Jackson estimates up to 100 stalls could eventually be constructed in the barn.

Additional facilities include at least two arenas, 6.5 miles of riding trails, hay barn, feed store, tack shop and polo grounds.

"We are going to have such a broad

spectrum of facilities here," Jackson said. "We want to ensure all of the people in the Milky Way Farms community who love their horses will know they are safe and well cared for," he said, adding that the facilities will be geared for horse people of all skills.

The Milky Way Equestrian Center will offer riding lessons, clinics by the biggest names in the equestrian world and horse training among its services. "We will also host shows of all types," Jackson said. "The events will be a big part of the Milky Way Farms Equestrian Center life."

Located in southern Middle Tennessee, Milky Way Farms is just a few miles west of Interstate 65, approximately 65 miles from Nashville and about 60 miles from Huntsville, Ala. For more information on Milky Way Farms of Tennessee visit online at www.MilkyWayFarmsTN.com or call 800-869-9788.

Ausburn purchased Milky Way Farms in 2006. It is 1,100 (+/-) acres of farmland once part of the estate of chocolatier Frank C. Mars. Additional plans for the community include the Jay Haas Galaxy Club that will include an 18-hole golf course designed by pro golfer Jay Haas and architect Kevin Tucker, tennis courts, swimming facilities and spa. The 25,000 (+/-) square foot Manor House, once Mars' home, will be restored to include a lodge and restaurant.

Milky Way Farms is part of New Horizons Communities, a Southeastern developer of high-quality, master-planned communities. Properties range from the mountains of West Virginia through Tennessee and to the shores of the South Carolina Low Country. Additional properties include Daniel's Trace located in Mountain City, Tenn., and The Retreat in Lewisburg, W.Va.





NEW HORIZONS COMMUNITIES

843.525.0123

www.NewHorizonsCommunities.com

We are a Southeastern developer of high-quality, master-planned communities. Our properties range from the mountains of West Virginia, through Tennessee and to the shores of the South Carolina Low Country. Under the visionary leadership of Charles Ausburn, each New Horizons amenity-rich community is designed with appreciation and respect for the delicate balance between development and the environment. We direct each of our projects with these guiding principles:

- Preserve the natural beauty of each region through environmentally-sensitive development methods.
- Provide a high quality of life.
- Promote physical and emotional wellness.
- Create a strong sense of community.
- Conduct business with the utmost integrity.



CHARLES AUSBURN, PRINCIPAL

A VISIONARY & NATURALIST

Long before he evolved as a respected developer, Charles Ausburn had an abiding respect for nature and a keen awareness about the environmental impact of over-building. When a close friend enlisted his help in a remodeling project, Charles refused to cut down an old oak tree and insisted his friend let him frame the new deck around the tree.

Tree and deck have lived in harmony for more than three decades. This spirit has driven Charles to seek out properties that genuinely benefit from development — old estates that without preservation would crumble, large land masses susceptible to overbuilding and properties many developers would find too costly or difficult to preserve.

ISLANDS OF BEAUFORT

Charles made his mark in the development community with his first major project off the coast of South Carolina, Islands of Beaufort. Charles secured this pristine peninsula in late 1997, just as property values along the coastal Carolinas began to soar. Located along Battery Creek, just minutes from downtown Beaufort, South Carolina, the community was designed to blend naturally with the Low Country greenery, marshes and deep water close to shore. The 196-homesite



community, including Cotton Island and the exclusive Deer Island, features homes designed by William Poole and is regarded as one of the most prestigious in the area.



866.303.8439
www.RetreatWV.com

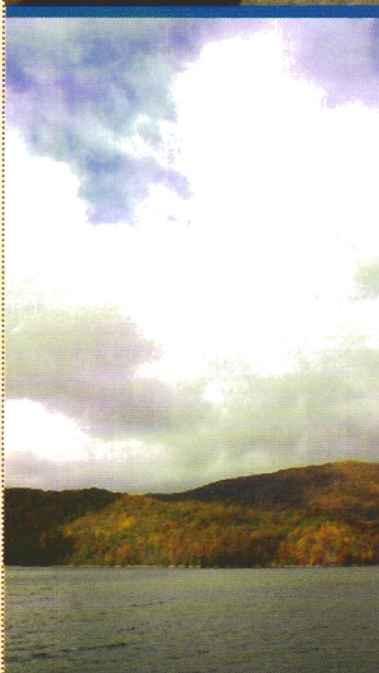
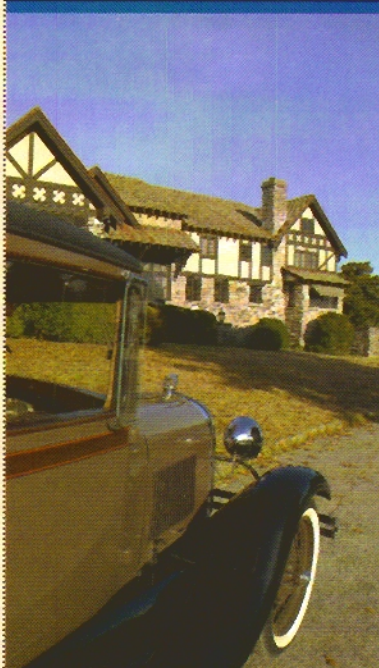


800.869.9788
www.MilkyWayFarmsTN.com

Daniel's Trace

ON DOE MOUNTAIN AT WATAUGA LAKE

423.768.0582
www.DanielsTrace.com



THE RETREAT ON WHITE ROCK MOUNTAIN

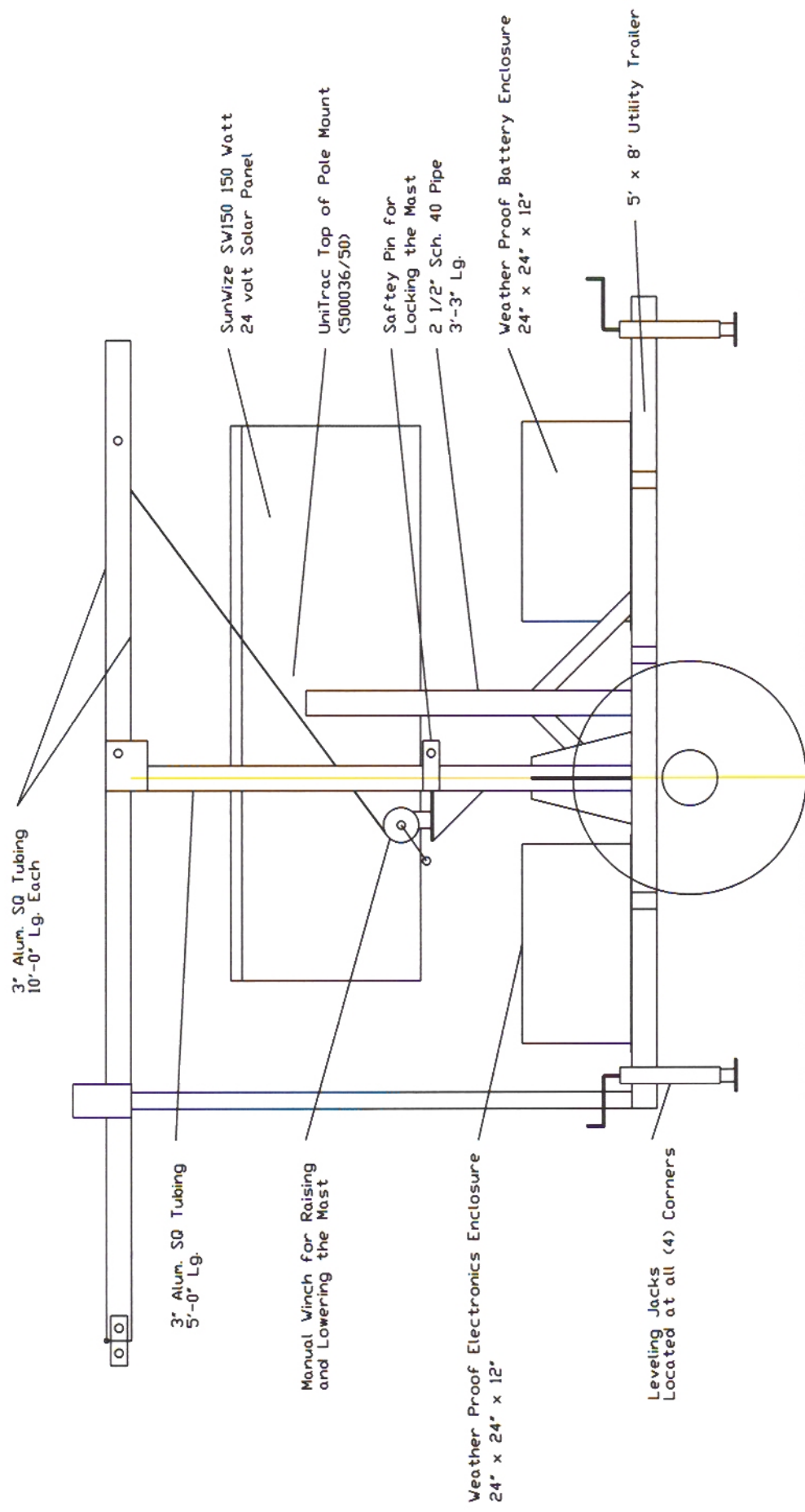
Moments from historic Lewisburg, West Virginia, The Retreat is built on an expansive 900 acres at the top of White Rock Mountain, one of the highest peaks in the area. Amenities include a mountaintop clubhouse; tranquil infinity-edge pool; mountainside grotto spa; luxury spa facilities including sauna, steam room and massages; state-of-the-art fitness facilities and a community outfitter who will plan outdoor adventures and cultural outings for residents.

MILKY WAY FARMS

Milky Way Farms is located between Pulaski and Lynnville, Tennessee, on 1,100 acres of farmland once owned by Frank C. Mars of Mars candy bar fame. Located approximately 65 miles from Nashville, Tennessee, Milky Way Farms will feature the Jay Haas Galaxy Club which includes an 18-hole golf course, tennis courts, swimming facility, and spa. The proposed Equestrian Club will feature an indoor/outdoor riding arena, horse and rider training, polo field, and more. The crowning jewel of the community is the Mars home which is being converted to the community's lodge and restaurant.

DANIEL'S TRACE

Daniel's Trace on Doe Mountain at Watauga Lake was named for adventurer Daniel Boone who first blazed the trails across the Blue Ridge into Tennessee. Located just outside Mountain City, Tennessee, the 8,600-acre property will have a marina with access to Watauga Lake and a host of amenities including a variety of restaurants, 7,500-acre lake with 125 miles of shoreline, golf course and tennis courts, spa and pools. This is one of the newest developments in the New Horizons family, and in keeping with the New Horizons philosophy, it will feature a wilderness preserve.



WebCam Provides Unique Opportunity to 'See' Home Depot Grow From the Ground Up

by Sheila Holden
LIFESTYLES EDITOR

Working on the premises of the city's motto, "People Helping People," three Pulaski businesses have worked together to provide a unique opportunity for locals.

Believed to be Pulaski's first, the webcam that watches the machinery at work on the future home of The Home Depot is showing the job "happen" day by day.

Up to 50 people at a time can access the webcam by going on the Internet at www.tyconexcavating.com, the Web site of Tycon Excavating, the Giles County contractor awarded the job under a general contractor from Georgia. Using the wireless broadband capabilities of iGiles.net, the webcam shows in realtime the work being done on the site located on West College Street behind the strip shopping center.

"It's exciting to watch the progress on the computer," said Peggy Tatum whose company, Tycon, had

the webcam installed. "You can see the trucks as they go in and out of the site and all the work that is going on."

The webcam's wide-angle eye is fixed on the area where most of the work is being done, Tatum said. Although the small electronic eye can span from side to side or zoom in to focus on something as small as a car tag, only the contractors have the capability to move the eye.

Tycon Excavating owners Bill and Peggy Tatum were delighted when in February they were awarded the job of preparing the site for the new business. However, the joy quickly faded when they remembered the upcoming Las Vegas trip. In just days they and a group of their employees were scheduled to fly to Las Vegas for a heavy equipment and general contractors expo. Their hotel reservations were non-refundable and besides, they didn't want to miss the expo.

Then they remembered other job sites that had used the webcam

technology.

"Basically we had a week to get this done," Peggy said. "I called David (Rackley) because I knew he'd know what to do and how to do it."

Newly-created Rackley Technologies is fast becoming a company associated with Internet technology. Within that week, after he was called, David Rackley had the webcam delivered, and the day before the Tatums left on their trip, he had everything hooked up and ready. For the Tatums, while they were in Nevada, that meant overseeing the work being done in Pulaski was only a mouse click away.

"It gave us, Bill in particular, a better peace of mind while we were away from the site," Peggy Tatum said, adding that the general contractor, T.D. Farrall, in Georgia can also access the webcam and see that the work is being done.

Rackley said digital webcams are used in a variety of ways such as for security purposes.



As David Rackley points out the webcam at the Home Depot construction site on West College Street to Peggy Tatum (above), the webcam records them (at left) and the movement of Tycon Excavating trucks hauling crushed rock onto the site. Tatum said on Monday-Saturday of last week Tycon hauled 1,931 truck loads of rock onto the site.



Anderson Electrical Products, Inc.
A Subsidiary of Hubbell Incorporated
George Whitfield Industrial Park Road
Post Office Box 310
Elkton, TN 38455
Tel: (931) 468-2563
Fax: (931) 468-2884

David Rackley
Rackley Technologies, LLC
P.O. Box 622
Pulaski, Tennessee 38478

October 5, 2006

Re: Letter of Recommendation

David,

We are submitting this Letter of Recommendation on behalf of the Elkton Facility of the Connectors Division of Hubbell Power Systems while thanking you for your services and contributions to our plant's security. We recognized the need for your services after several security issues occurred in our plant. Rackley Technologies has provided and implemented a solid solution for our immediate and future security enhancement needs.

Thanks to your services and products, we now have a system in place to insure our employees and facilities are safer both inside and out of our plant. We encourage your growth as a technology and system solution provider for local industries and businesses throughout the area.

It is with your system and technology that we can offer a more secure workplace from not only a security system aspect but also insuring our employees are operating in a safety conscious manner.

If you have any future potential customers requesting feedback or references for your company, feel free to offer us as a satisfied and recommending customer.

Sincerely,

A handwritten signature in blue ink that reads "Reid Shaver".

Reid Shaver
Mfg Engr/Maint Supv
HPS - Elkton



RACKLEY TECHNOLOGIES, LLC.

Merit Shop

Rackley Technologies, LLC is a proud new member of Associated Builders and Contractors of North Alabama. We were recruited by Brindley Construction Group and Tycon Excavating Contractors, Inc. in a joint effort in the Spring of 2006.

In the short time we have been a member, we have built some exciting relationships with existing members and become involved as much as we can. Thus far, it has been a wonderful investment of our time and money to join this organization.

We are proud to say, on the Shoppes at Campbell Station, we were very fortunate to work with several other members of ABC, including:

Brindley Construction Group
Tycon Excavating Contractors, Inc.
Sharp Motor Company

We are proud to display this logo in our window and in our marketing materials!



110 South First St. / P.O. Box 622 • Pulaski, Tennessee 38478
www.rackleytechnologies.com • david@rackleytechnologies.com • 931-363-6922

Project Entry Qualifications, Rights and Agreement

Include this form in the back of the project's entry binder

Entry Category Reassignment

ABC reserves the right to change an entry's original category if it determines that a project's opportunity to win will be enhanced by the change to the new category.

Photographs

Photographs submitted with the application become the property of ABC. Applicant must obtain the rights from the photographer to reprint the photographs without limitations. Ownership of a physical photo is not sufficient. Photographers normally maintain the copyright of photos; therefore, the applicant should confirm it has permission to copy and send photos to ABC for use without limitations. Any liability for copyright violation shall be borne solely by the applicant.

Warranty

The applicant warrants that the work is original, that its publication will not infringe on the rights of others, and that it has the full power to make this grant.

Applicant Agreement

I have enclosed a check for \$100 payable to "ABC of North Alabama" in accordance with the entry fee requirements. Also enclosed is the project entry binder that was prepared in accordance with the requirements indicated in this application.

I hereby give permission to Associated Builders and Contractors (ABC) to use the photographs and any information submitted to the ABC of North Alabama Excellence in Construction Awards competition in ABC awards materials, including presentations and printed matter, as well as promotional materials and news releases.

Print name: David Rackley

Title: President

Signature: 

Date: November 19, 2007

E-mail address: david@rackleytechnologies.com

Phone: 931-363-6922

Fax: 931-363-6924

For ABC of North Alabama EIC banquet:

CD: 1. Pick 5 photos from your entry and any other photos you would like to submit for the ABC EIC award ceremony. Also, clearly label the photo you would like to be displayed at the EIC reception and in the event program. **NOTE:** Take horizontal pictures for the ad boards and program. 2. We will need an electronic copy of your company's logo. 3. 100-200 word narrative of your project (MS word or text format) 4. All photo's and company logos must be highest resolution possible and not contained in any other program such as word or power point. The following file formats are acceptable: JPG, TIF, PNG.

Don't forget: \$100 entry fee - Application form - Safety information sheet – 3 reference letters - Tab dividers for each section and your CD.

All Applicants

Please provide the information you would like to have engraved on your award if you are a winner.

Rackley Technologies, LLC _____

2007

Milky Way Farms Camera Solutions _____